



atp

AUTOMOTIVE THEFT PROTECTION™

Features of the ATP® Program

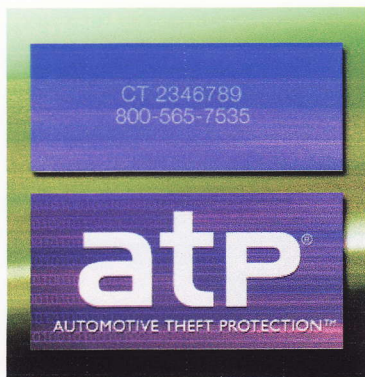
- *Up to six windows are engraved using our etch cream and stencils.*
- *Two window stickers provide notice of the vehicle's protection and aids in rapid vehicle recovery.*
- *Provides round the clock protection 365 days a year.*
- *Meets National Insurance Crime Bureau "Layer Two" Protection Rating, and may help reduce insurance rates.*
- *Program earns up to 500 Partners in Profit® Gift-Points.*
- *Adds significantly to the dealers gross profit margins and once sold can not be cancelled by the consumer.**

**(Cancellation privilege is available in Florida)*

atp

AUTOMOTIVE THEFT PROTECTION™

ATP® WINDOW ETCH



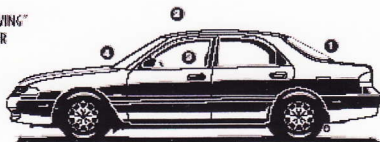
APPLICATION INSTRUCTIONS

- Applied to at least two windows per vehicle.
- Applies in less than 15 Minutes.

Preparation

Check that the numbers on the stencil strip are correct, as engraving cannot be removed. Avoid application in direct sunshine, or wet, windy or dusty conditions, as the stencil can dry out before engraving is complete. Have water and a clean cloth ready. Decide which areas are to be engraved. (See picture below.) Six stencil strips are provided. Clean the outer glass surfaces where engraving is required.

PERMANENTLY "GLASS ENGRAVING"
REGISTERED CODE NUMBER



- 1 REAR WINDOW GLASS
- 2 T-TOP / SUN ROOF
- 3 SIDE WINDOW GLASS
- 4 FRONT WINDSHIELD

Application

Remove perforated numbered stencil tissue from white backing paper. Place the stencil in desired position on outside of window. Press gently to smooth wrinkles for perfect engraving. Carefully dab ATP® cream over numbered stencils only. (For best results, use a dabbing motion instead of a back and forth, brushing motion.) Wait five minutes. Peel off stencil and discard. Clean window with soap and water.

Caution

Keep applicator sealed when not in use. Special care should be exercised in the use of this kit, as it involves the use of a chemical, which is corrosive to glass. Once the engraving chemical has come into contact with glass, the resulting marks will be permanent. If this occurs wipe off with window cleaner.